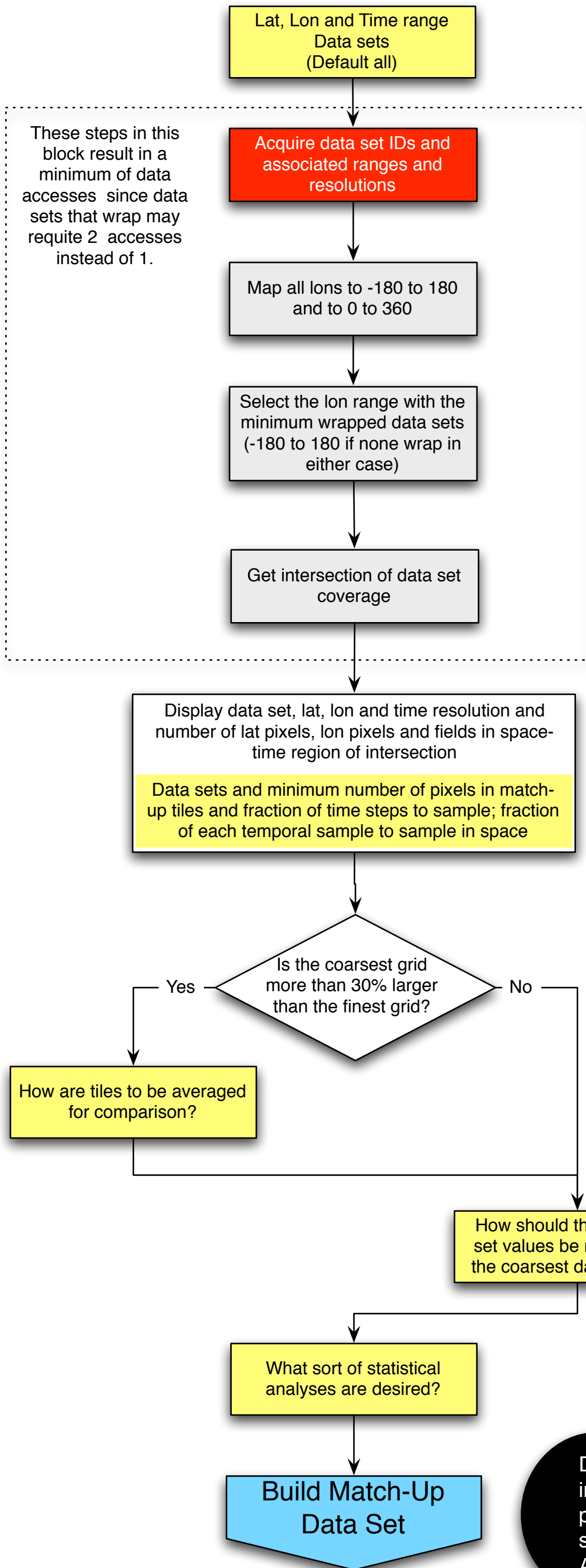


# User input module



This block is designed to get the input required for the comparison SST fields from several data sets.

- Yellow boxes request user input.
- Red boxes may acquire data over the net.
- Gray boxes for local processing

## Assumptions

- 1) The system knows what data sets are available.
- 2) All input data sets are 3D (lat, lon, time) in a rectangular grid.

Data set IDs, space-time range of intersection of data sets; minimum # of pixels for match-up tiles; temporal and spatial sampling fractions  
Also parameters used in the analysis step